

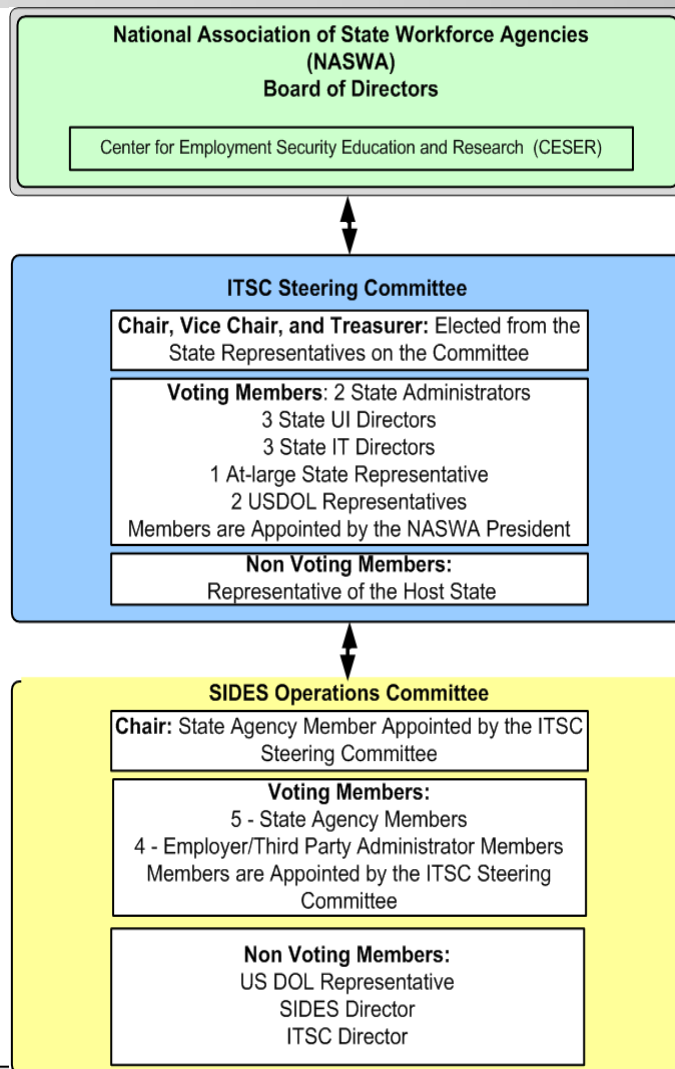
UI SIDES

State Information
Data Exchange System

SIDES Governance

September 2014

Governance



UI SIDES

State Information
Data Exchange System

ITSC Steering Committee - Structure and Term

- Membership
 - The STCO is composed of two State Administrators, three State UI Directors, three State Information Technology Directors, a host state (Maryland) representative, an at large state member and two USDOL representatives.
 - Members are appointed by the current NASWA President
 - The Chair, Vice Chair and Treasurer are elected by the committee
- SIDES Duties of the ITSC Steering Committee will include:
 - Development of the SIDES annual budget and financial plan including the fee structure for participating states to cover the operation of SIDES;
 - Development of policy related to the operation of SIDES;
 - Overall guidance/direction of SIDES;
 - Resolution of certain disputes;
 - Determinations of whether to implement major system changes or enhancements and changes to standard formats in production.

Operations Committee –Structure and Term

- Membership:
 - Members and the Chair are selected by the ITSC Steering Committee for a three year term.
 - Five voting members representing participating state agencies;
 - Four voting members representing participating employers or TPAs; and
 - Three non-voting members: the SIDES Director, a US Department of Labor representative, and the Information Technology Support Center Executive Director.
- Duties of the Operations Committee will include:
 - Functioning as the formal decision-making body on behalf of the participating SIDES entities (states, employers and TPAs).
 - Providing guidance and input for all program and business issues
 - Providing input on proposed new functionality and features, and guidance and input on technical issues.
 - Establishing ad hoc workgroups and/or committees; asks committees to work jointly to address common issues of concern.
 - Reviewing and approving enhancements requested by subscribing states
 - Make recommendations regarding standard format changes to the ITSC Steering Committee

Operations Committee –Members

- Pete Shipman, chair - Assistant UI Director, OK
- Jeff Long, state member – Deputy UI Director, OH
- Clay Cole, state member – UI Business Support Manager, TX
- Sheryl Linton, state member – Support Manager, KS
- Ryan West, state member – Regional Operations Manager, IA
- Tom Byerley, employer member – ADP
- Lori Roberts, employer member – Equifax
- Jeff Skindzier, employer member – Employers Edge
- Jenine Hallings, employer member – Paychex
- Subri Rahman, non-voting member – USDOL
- Joe Vitale, non-voting member – ITSC
- Jerry Pectol, non-voting member - ITSC